

# State of Wyoming Corner Record

(In compliance with the CORNER PERPETUATION AND FILING ACT, Wyoming Statutes, 1997 Section 33-29-140 et. seq. and the Rules and Regulations of the Board of Professional Engineers and Professional Land Surveyors)

Reverse side of this form may be used if more space is needed.

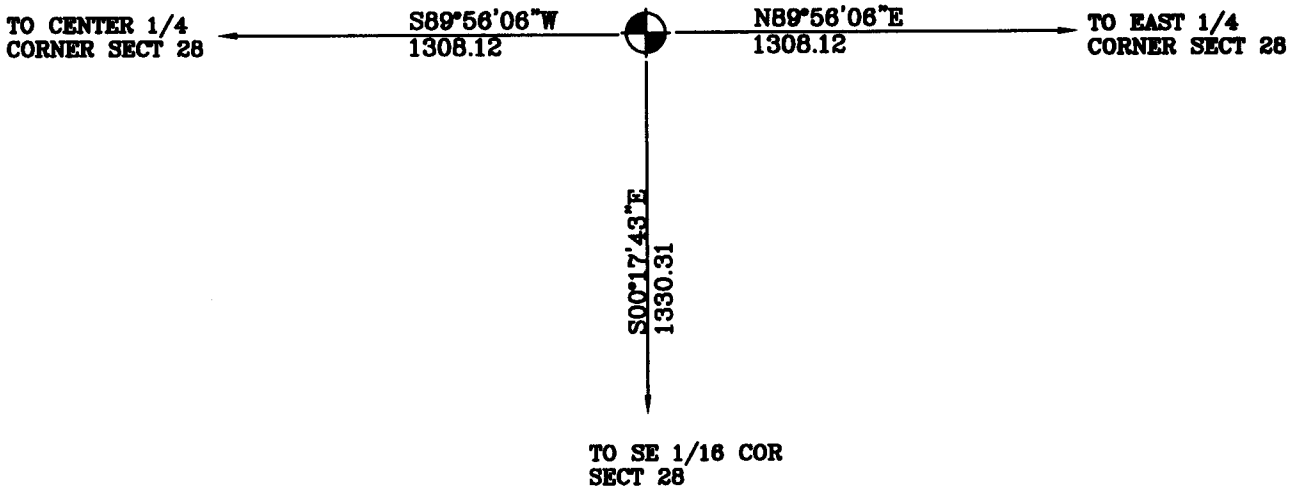
Record of original survey and citation of source of historical information (if corner is lost or obliterated). Description of corner monumentation evidence found and/or monument and accessories established to perpetuate the location of this corner. Sketch of relative location of monument, accessories, and reference points with course and distance to adjacent corner(s) (if determined in this survey). Method and rationale for reestablishment of lost or obliterated corner.

G.L.O. RECORD:  
NOTHING SET



**AT THE CORNER:**  
FOUND NOTHING.  
PLACED A 2 1/2" ALUMINUM CAP SET  
ON A 5/8" X 24" REBAR 3" ABOVE  
THE SURFACE STAMPED AS SHOWN.

CORNER WAS SET BY SINGLE  
PROPORTION METHOD



Date of Field Work: 11/18/08

Office Reference: RABOU

## Cross Index Plat

1	2	3	4	5	6	7	8	9	10	11	12	13	14	15	16	17	18	19	20	21	22	23	24	25	26	27	28	29	30	31	32	33	34	35	36		
A	+	+	+	+	+	+	+	+	+	+	+	+	+	+	+	+	+	+	+	+	+	+	+	+	+	+	+	+	+	+	+	+	+	+	+	+	+
B	+	6	+	5	+	4	+	3	+	2	+	1	+																								
C	+	+	+	+	+	+	+	+	+	+	+	+	+																								
D	+	+	+	+	+	+	+	+	+	+	+	+	+																								
E	+	+	+	+	+	+	+	+	+	+	+	+	+																								
F	+	+	+	+	+	+	+	+	+	+	+	+	+																								
G	+	7	+	8	+	9	+	10	+	11	+	12	+																								
H	+	+	+	+	+	+	+	+	+	+	+	+	+																								
I	+	+	+	+	+	+	+	+	+	+	+	+	+																								
J	+	+	+	+	+	+	+	+	+	+	+	+	+																								
K	+	+	+	+	+	+	+	+	+	+	+	+	+																								
L	+	18	+	17	+	16	+	15	+	14	+	13	+																								
M	+	+	+	+	+	+	+	+	+	+	+	+	+																								
N	+	+	+	+	+	+	+	+	+	+	+	+	+																								
O	+	+	+	+	+	+	+	+	+	+	+	+	+																								
P	+	19	+	20	+	21	+	22	+	23	+	24	+																								
Q	+	+	+	+	+	+	+	+	+	+	+	+	+																								
R	+	+	+	+	+	+	+	+	+	+	+	+	+																								
S	+	+	+	+	+	+	+	+	+	+	+	+	+																								
T	+	+	+	+	+	+	+	+	+	+	+	+	+																								
U	+	+	+	+	+	+	+	+	+	+	+	+	+																								
V	+	+	+	+	+	+	+	+	+	+	+	+	+																								
W	+	+	+	+	+	+	+	+	+	+	+	+	+																								
X	+	+	+	+	+	+	+	+	+	+	+	+	+																								
Y	+	+	+	+	+	+	+	+	+	+	+	+	+																								
Z	+	+	+	+	+	+	+	+	+	+	+	+	+																								

Firm/Agency, Address  
 Western R&D, Ltd.  
 5809 Yellowstone Rd, Suite B  
 Cheyenne, Wyoming 82009  
 Telephone Number: (307) 632-5656

This corner record was prepared by me or under my direction and supervision.  
**SEAL & SIGNATURE**

● Denotes Monument Set



Corner Name EAST 1/16 CORNER Section 28, T 17 N, R 61 W, 6th P.M.      Cross-Index No.: I-12  
 County: LARAMIE Wyoming  
 SBRPEPLS/PLSW: March 1994; PLSW January 1998